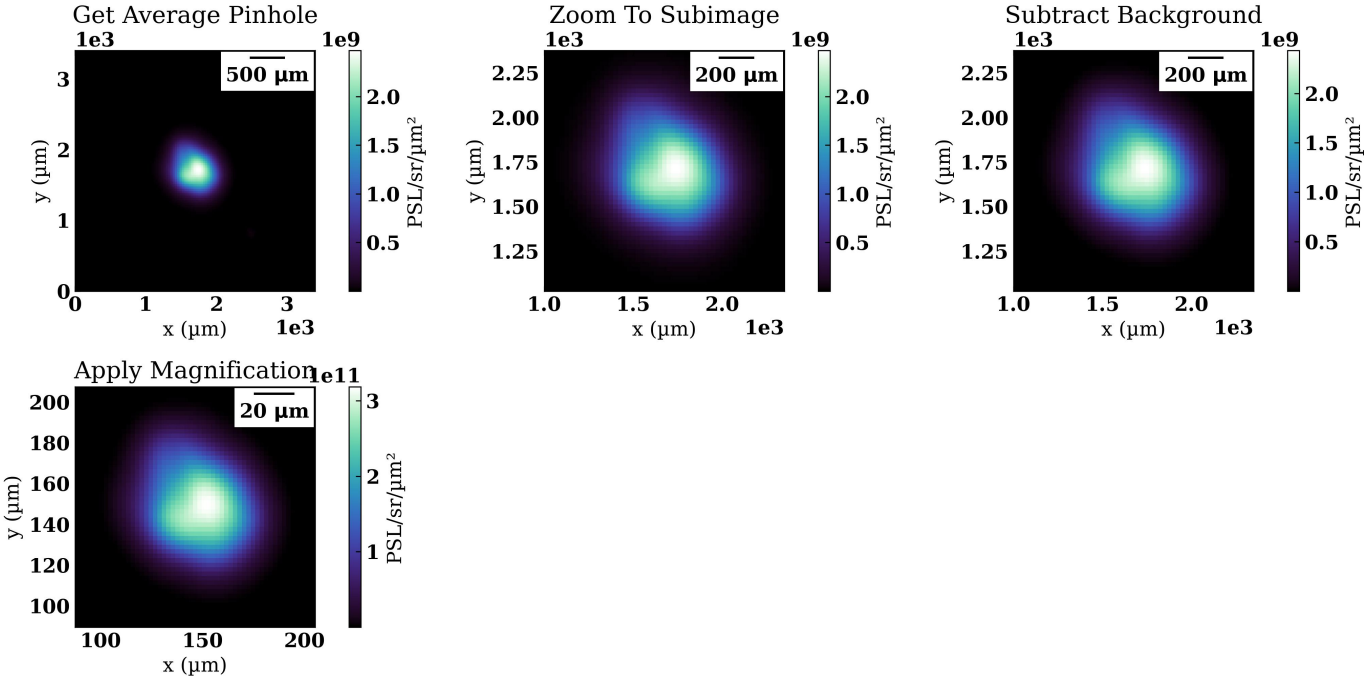
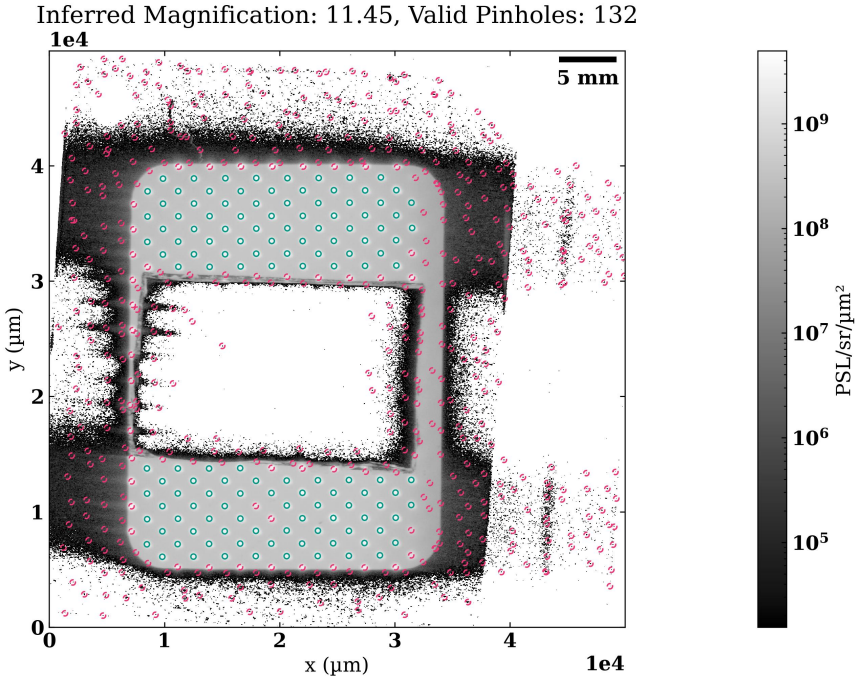


# TRXI IP 1

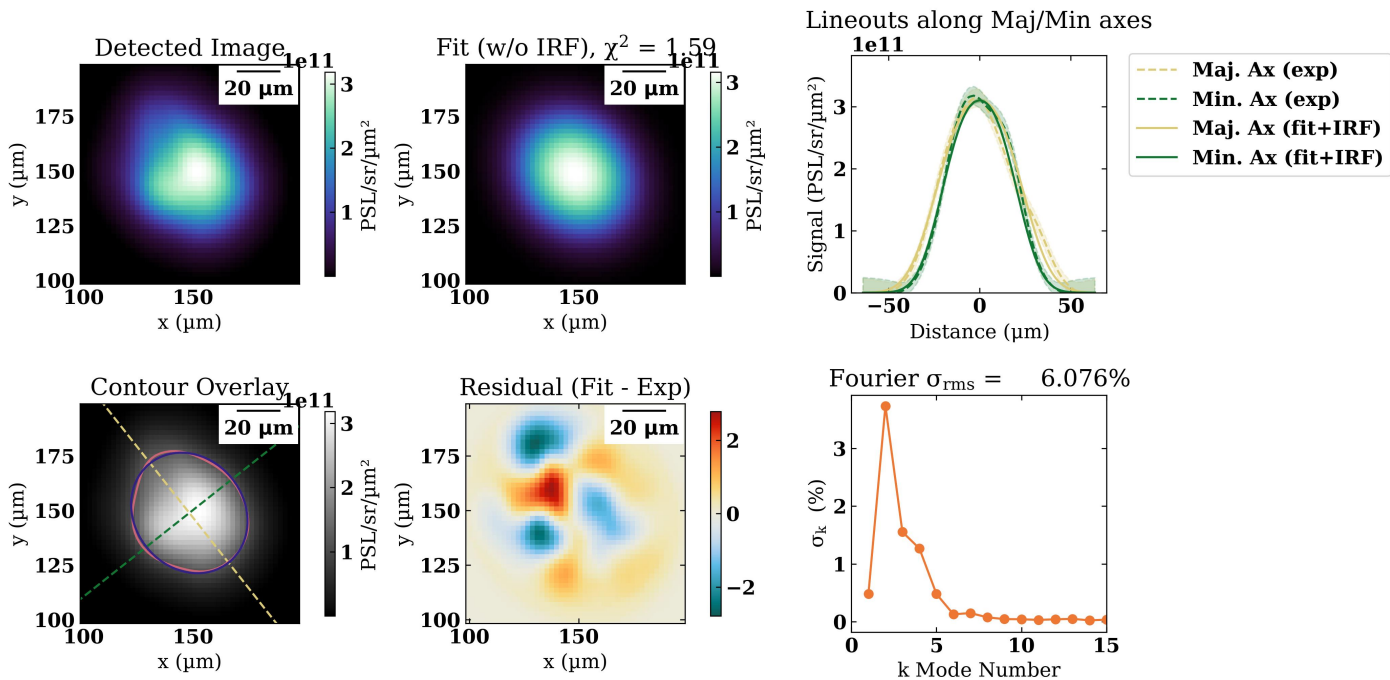
TRXI IP 1 Processing



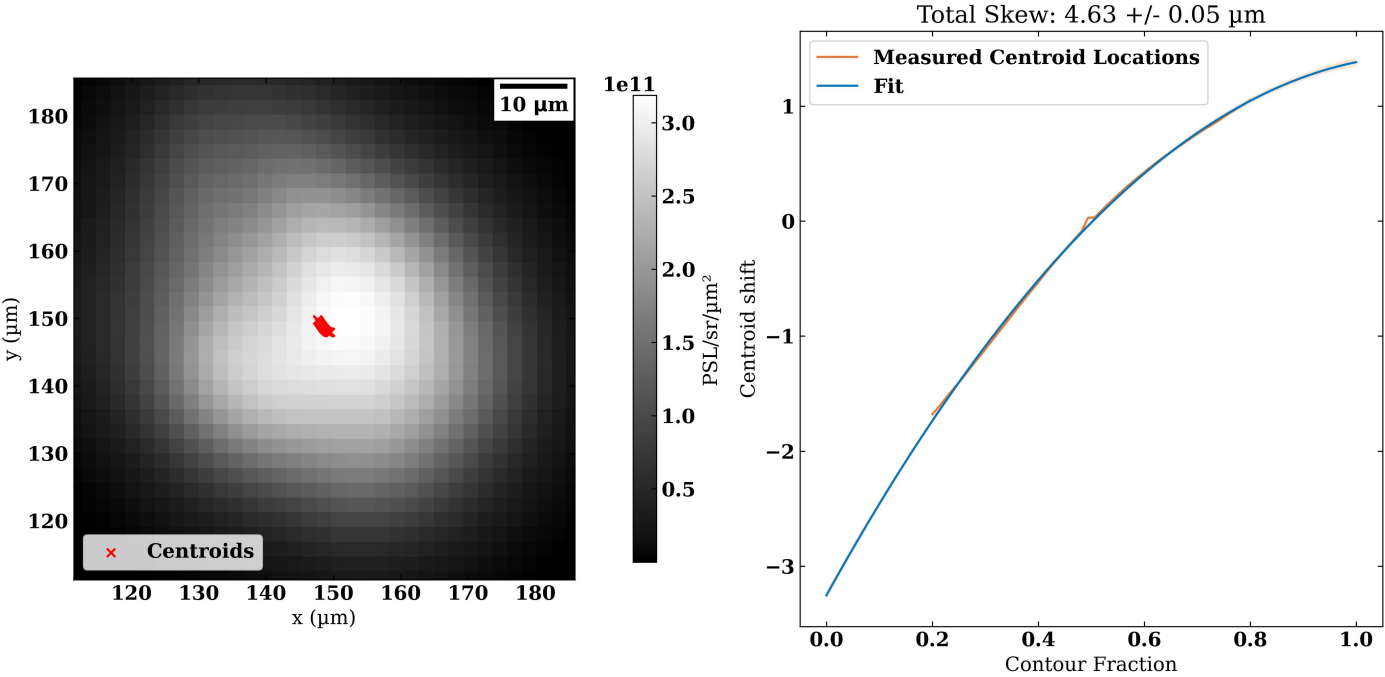
TRXI IP 1 Pinhole Locator Report



## TRXI IP 1 SG Fit



## TRXI IP 1 Skew Fit



TRXI IP 1 Results

Parameter	Experimental
Amplitude	3.16e+11 ± 3.63e+09 PSL/sr/μm²
Hyper Exponent0	2.45 ± 0.134
Hyper Exponent1	2.65 ± 0.0416
R0	24.4 ± 0.129 μm
Supergaussian Exponent	2.54 ± 0.0701
R17	30.4 ± 0.115 μm
Axial Ratio	1.17 ± 0.00593
L2 Angle	2.24 ± 0.0151 rad
Major Axis	26.4 ± 0.121 μm
Minor Axis	22.6 ± 0.156 μm
X Center	148 ± 0.0648 μm
Y Center	149 ± 0.0687 μm
Logp Per Dof	1.59

# TRXI IP 1 Response Functions

